

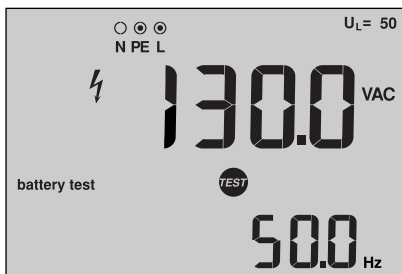
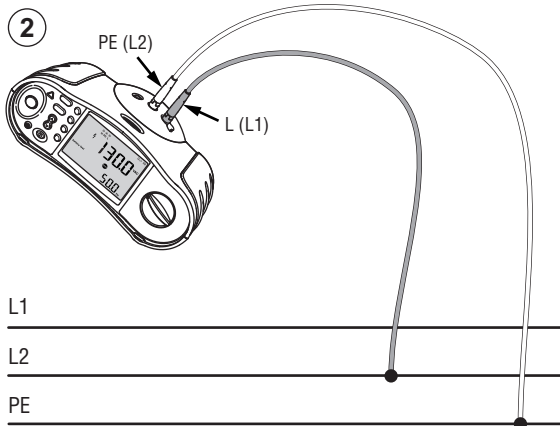
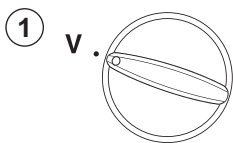
## 165X IT System Quick Reference Guide

---

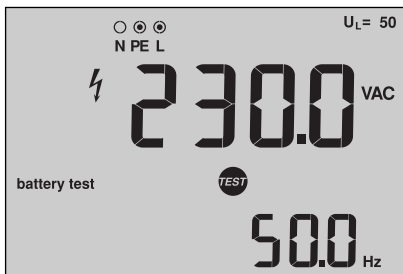
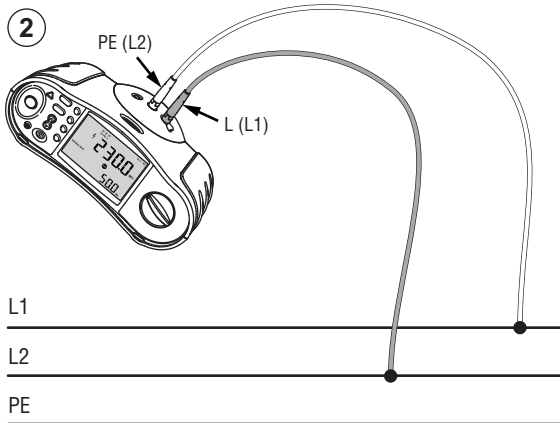
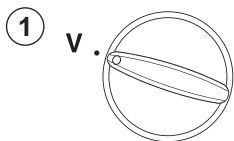
### Warning

- Read the 165X Users Manual before using the tester.
- Lisez le mode d'emploi du 165X avant d'utiliser le testeur.
- Leggere il manuale d'uso del 165X prima di usare il tester.
- Vor dem Gebrauch des Testgeräts das 165X-Bedienungshandbuch lesen.
- Lea el Manual de uso del comprobador 165X antes de utilizarlo.
- Leia o Manual do Usuário 165X antes de usar o testador.
- Lees de 165X gebruiksaanwijzing vóór gebruik van de tester.
- Les bruksanvisningen for 165X før måleinstrumentet tas i bruk.
- Man bør læse brugsanvisningen til modelserie 165X, inden instrumentet tages i brug.
- Lue 165X-käyttöopas ennen tämän testerin käyttöä.
- Läs användarhandboken för 165X innan du använder testinstrumentet.

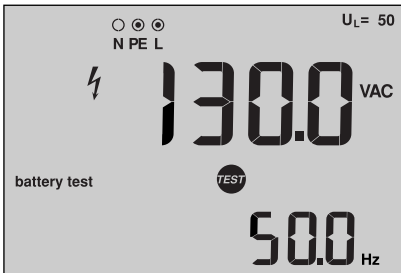
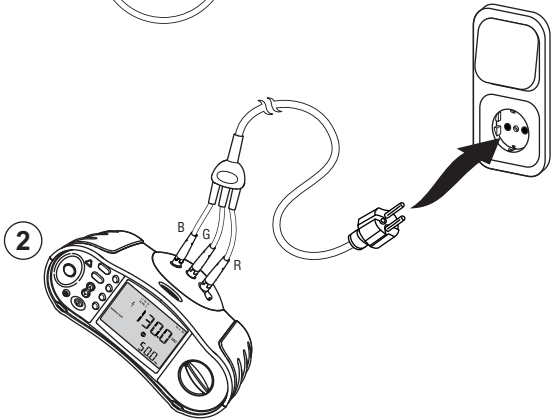
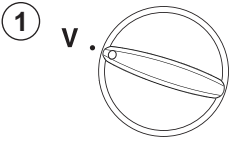
# V, Hz



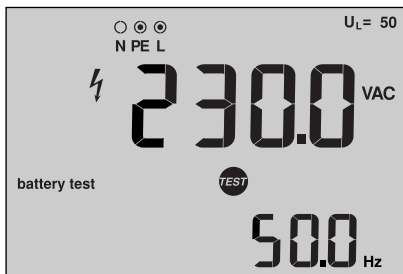
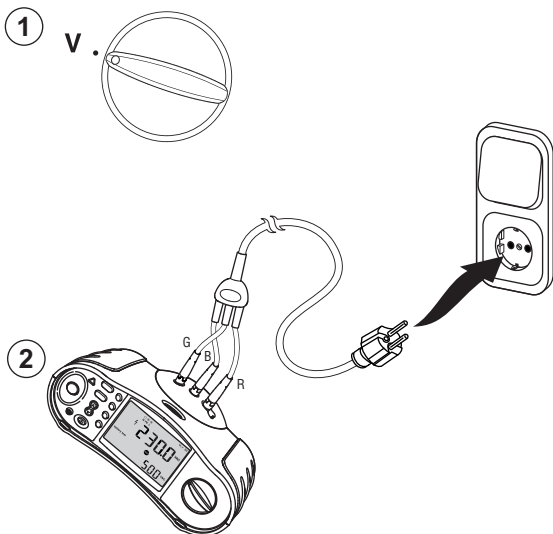
# V, Hz



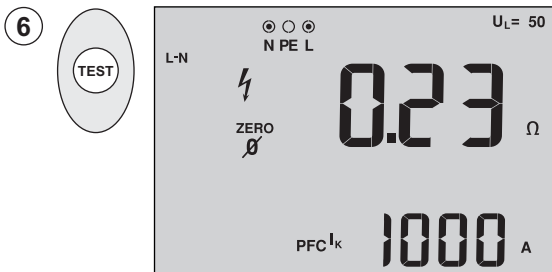
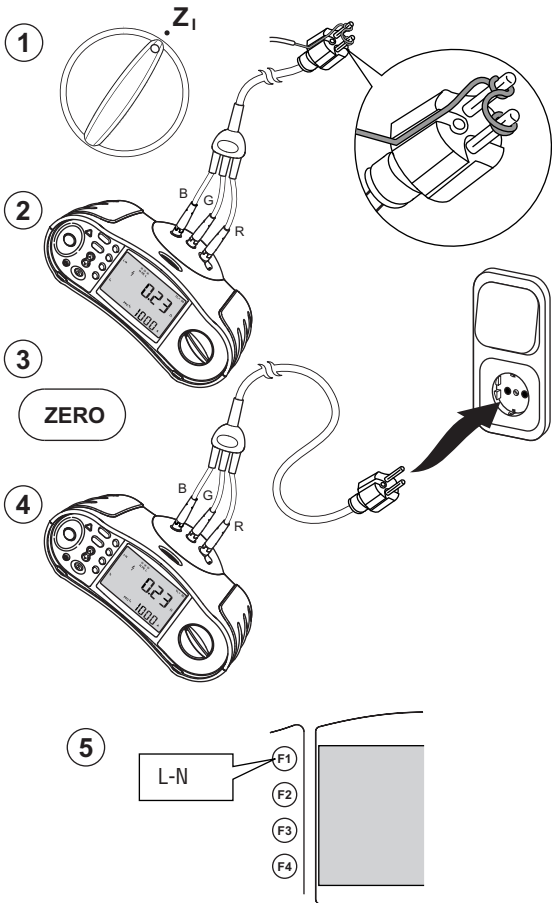
# V, Hz



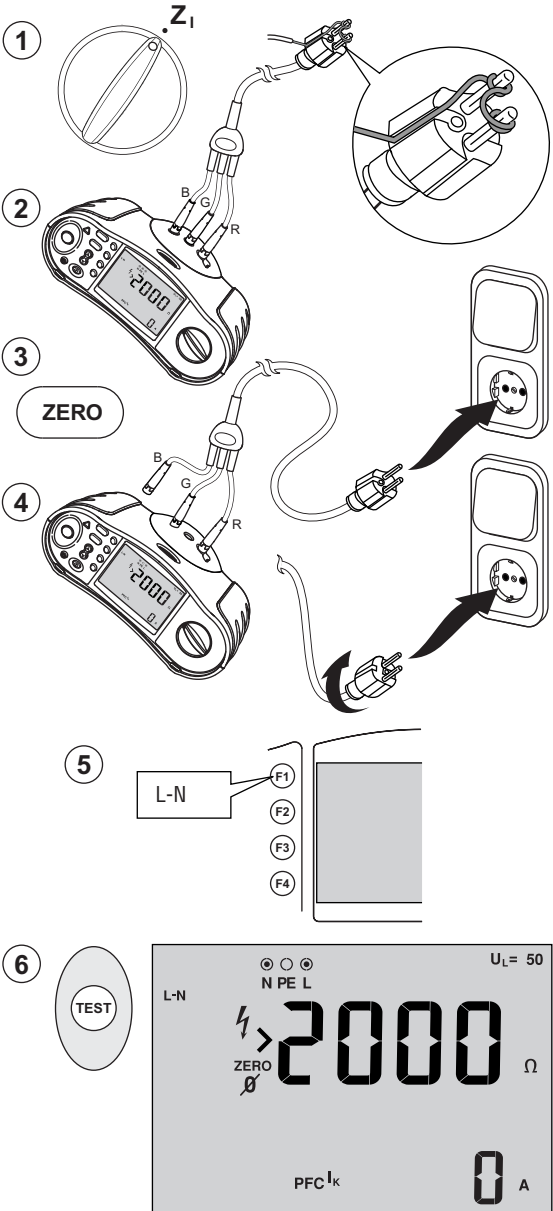
# V, Hz



# Z<sub>1</sub> Loop · Boucle · Schleife



# Z<sub>1</sub> Loop · Boucle · Schleife

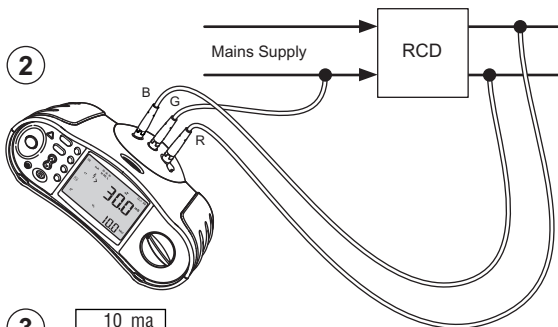


# $\Delta T / I_{\Delta N}$ RCD · Disjoncteur différentiel · FI

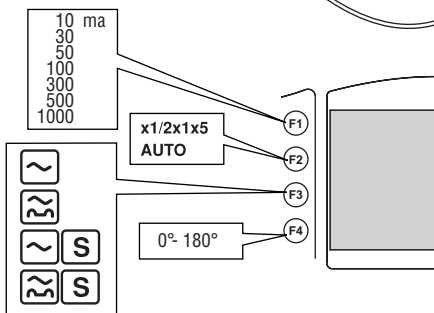
1



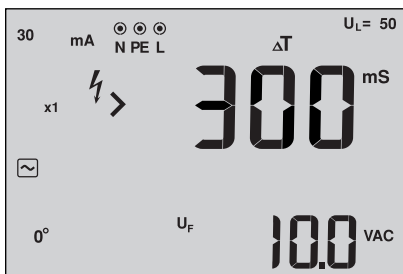
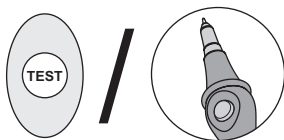
2



3

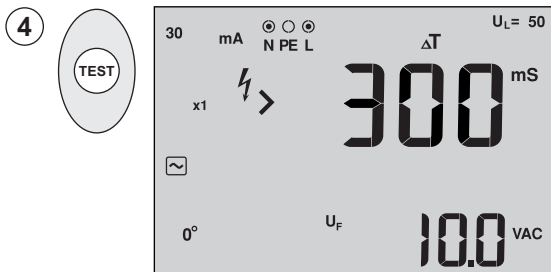
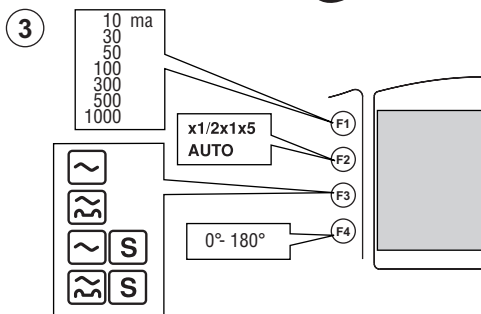
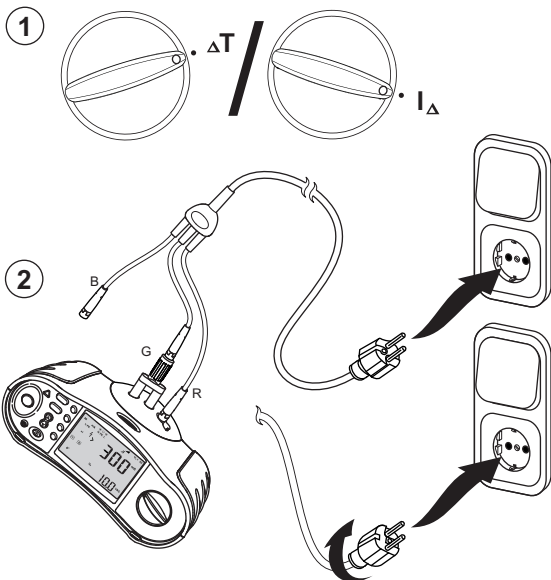


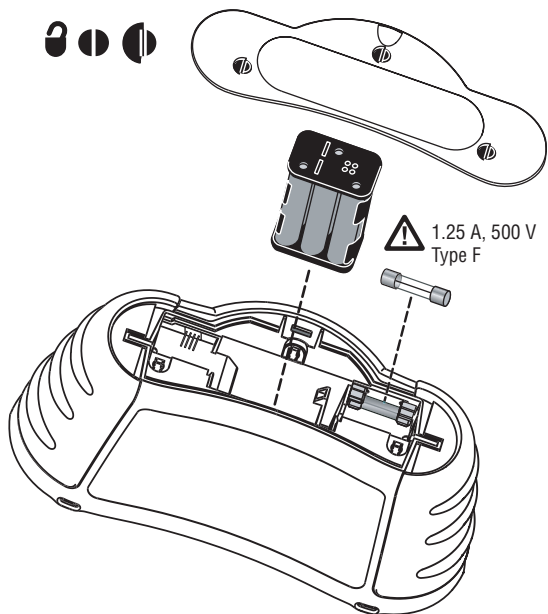
4





# $\Delta T / I_{\Delta N}$ RCD · Disjoncteur différentiel · FI





IR

